

EDMUS 5.7.1 – INSTRUCTIONS D'INSTALLATION EN RÉSEAU

For a **local, non network installation**, see the accompanying document:
« EDMUS 5.7.1 - Installation Instructions.pdf ».

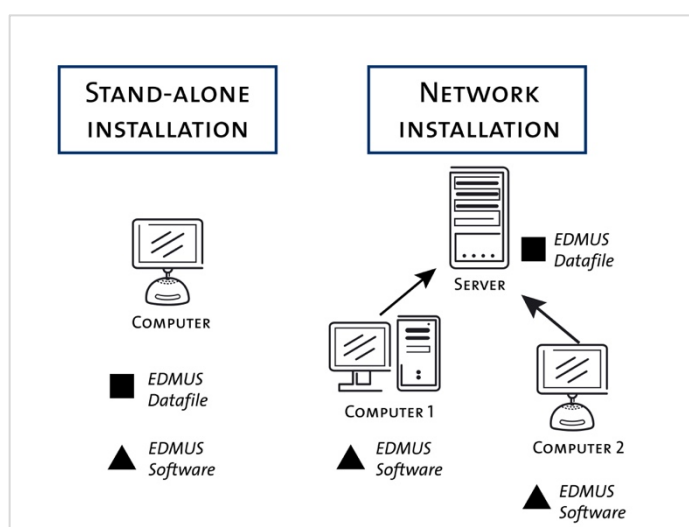
To be able to make a NEW installation of EDMUS,
you must have administrator rights on the computer (for the duration of the installation).

(Note: the illustrations were made for EDMUS 5.7, they will mention 5.7.1 in the new version)

Introduction

EDMUS is comprised of 2 main items:

- the EDMUS database file, containing the patient data;
- and the EDMUS program itself, which accesses the database.



Thus, to share your EDMUS database over a network, enabling several computers to access the same datafile, you only need to follow these 3 steps:

1. Place your EDMUS database file on a server.
2. Install EDMUS on one of the computers that must access the datafile.
3. Set EDMUS to use the datafile on the server.

Then repeat steps 2 and 3 above on every computer that must access the database.

A network installation can be performed under various circumstances:

- You are installing EDMUS for the first time.
- You already had a stand-alone installation of a previous EDMUS version (4 or 5), and you wish to move to a network installation.
- You already had a network installation of a previous EDMUS version (4 or 5), and you wish to upgrade it to version 5.7.1.

⇒ In these 3 cases go to step 1 below.

- You already had a stand-alone EDMUS installation of version 5.7.1, and you wish to move to a network installation.

⇒ In this last case go directly to step 13 below.

BEFORE THE INSTALLATION

Before starting the upgrade, all users must be disconnected from the database.

1. Important: first make a backup copy of your EDMUS database

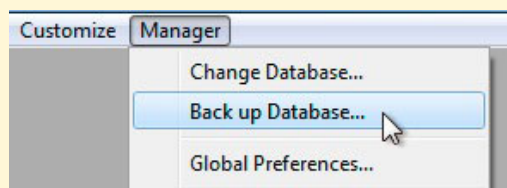
If you already have an EDMUS installation,
make sure you have a recent backup copy of your EDMUS database
 (the file containing your patients' data) before proceeding with the installation.

The database file is usually named "Edmus.df1", but may have been renamed.

If you have an EDMUS 5 or higher database

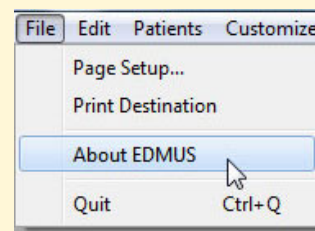
○ *Make a backup copy directly from EDMUS*

Choose "Back up Database" from the "Manager" menu to **make a backup copy of your database file** at the location of your choice.



○ *Make a backup copy manually*

To find out where your EDMUS datafile is located, choose "About EDMUS" from the "File" menu.:

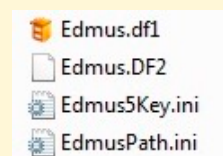


In the window that opens, the path to the database file is shown:

```
Database C:\USERS\PUBLIC\EDMUS SOFTWARE
V5\EDMUSdata\Edmus.df1
```

Make a backup copy of this file before continuing with the installation.

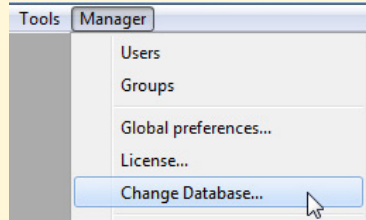
Important: if there is also a file with the same name as the database file and a .DF2 extension, copy it as well: it is part of the database.



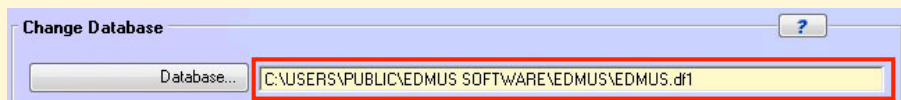
If you have an EDMUS 4 or 4.1 database

- *Make a backup copy manually*

To find out where your EDMUS datafile is located, choose "Change Database" from the "Manager" menu:



In the window that opens, the path to the database file is shown:



- **Make a backup copy of this file** before continuing with the installation.

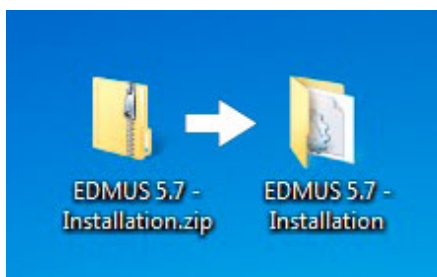
DO NOT CONTINUE UNTIL YOU HAVE A BACKUP COPY OF YOUR EDMUS DATABASE FILE.

Keep this copy in a safe place, at **another** location (external hard disk, USB stick etc.) than the original database.

If you cannot find the database file to back up, please contact technical support (support@edmus.org).

2. If you haven't already, download EDMUS 5.7.1 from the EDMUS web site

http://www.edmus.org/en/soft/edmus_dl.php



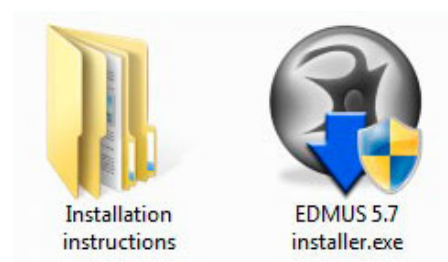
The downloaded "EDMUS 5.7.1 - Installation.zip" file is a zipped folder, you should unzip it:

- *Windows*: right-click on the file, then choose "Extract" or "Extract All" (the wording may vary with your version of Windows).
- *Mac*: double-click the file.

The "EDMUS 5.7.1 - Installation" folder will be created next to the .zip file.

The "EDMUS 5.7.1 - Installation" folder contains:

- the installation program itself ("EDMUS 5.7.1 installer"),
- and installation instructions in English and French.



THE INSTALLATION

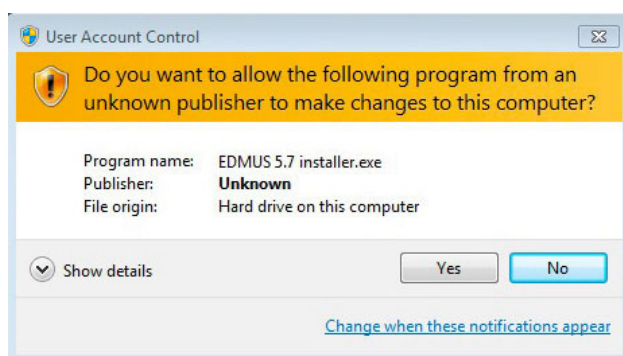
3. Launch the installation program

Double-click the installation program ("EDMUS 5.7.1 installer") to start the installation of EDMUS.



A note on security settings

When launching the EDMUS installer program for the first time, depending on the security settings of your computer, you may encounter a message telling you that the installer program comes from "an unknown publisher" or "an unidentified developer":



In this case:

On Windows

Click "Yes" to "allow the following program from an unknown publisher to make changes to this computer".

On Mac OS X

Right-click on the installer and choose "Open", then click "Open" in the dialog window that appears.

4. Proceed with the installation

When installing, three situations may occur:

CASE 1: You are installing EDMUS for the first time on this computer

No option will be proposed. Accept the terms of the license, then let the installation proceed.

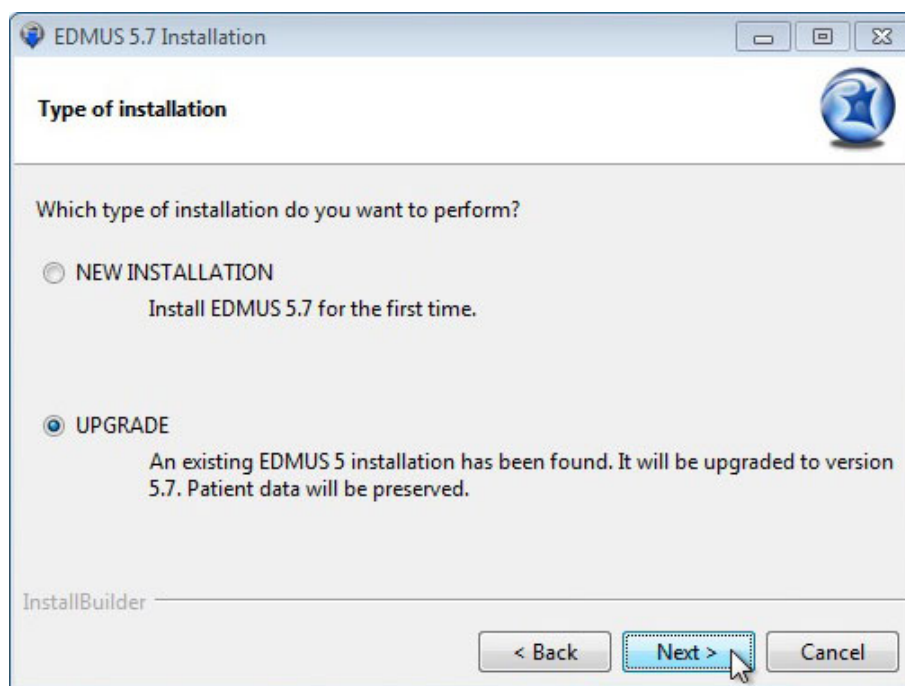
What's going to happen

EDMUS 5.7.1 will be installed, with an empty database (no patient).

CASE 2: You already have a previous version of EDMUS 5 (5.0 to 5.7) on this computer

Accept the terms of the license, then select the "UPGRADE" option (it will be selected by default).

Then let the installation proceed.



What's going to happen

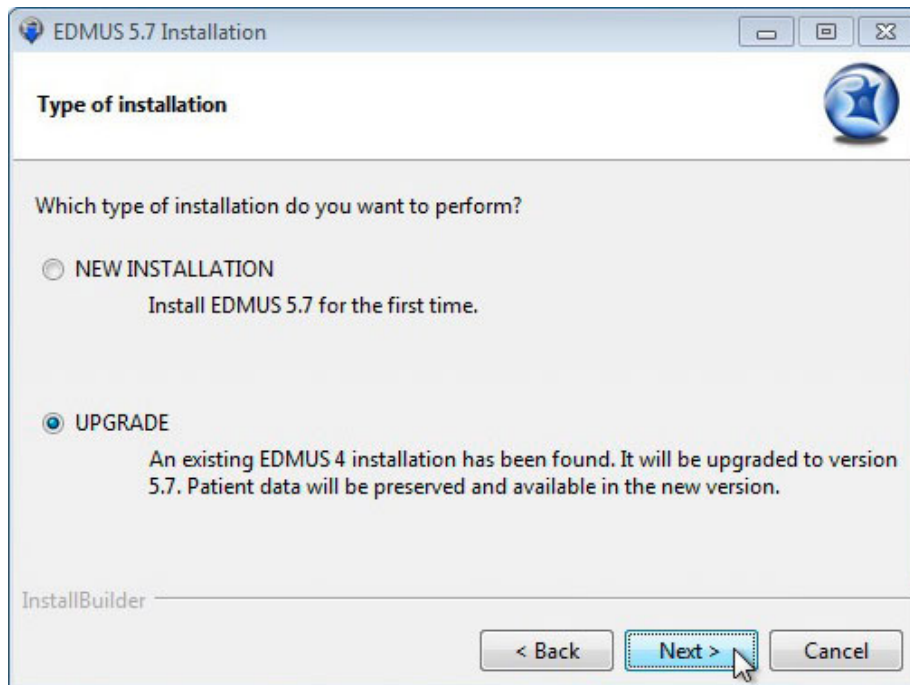
EDMUS 5.7.1 will be installed, replacing EDMUS 5 (5.0 to 5.7).

Your EDMUS datafile (with your patients' data) will be untouched.

CASE 3: You already have EDMUS 4.0 or 4.1 on this computer

Accept the terms of the license, then select the "UPGRADE" option (it will be selected by default).

Then let the installation proceed.

***Ce qui va se passer***

EDMUS 5.7.1 will be installed, without replacing EDMUS 4.0 or 4.1, with an empty database (no patient).

Your network EDMUS 4 datafile (with your patients' data) will be untouched.

At the end of the installation, the installer program will recommend that you uninstall EDMUS 4:

leave the box checked to uninstall EDMUS 4, and click "Finish".

Completing the EDMUS 5.7 Installation

EDMUS 5.7 was successfully installed on your computer.

☒ Uninstall EDMUS 4 (HIGHLY RECOMMENDED)

AFTER INSTALLING EDMUS on the first computer**VERY IMPORTANT**

If you already had a network EDMUS database (EDMUS 5 or 4):

DO NOT LAUNCH EDMUS 5.7.1 YET

Go to step 5

Otherwise, if this is a first installation (no previous EDMUS database),
or if you had a stand-alone EDMUS installation (no network database):

Go to step 6

**5. If you already had a network EDMUS database (EDMUS 5 or 4):
place a copy of the database into the new installation**

At step 1, you have made a backup copy of your database. If it was a network database, you should now **place another copy of this database into the EDMUS 5.7.1** installation you have just created.

Upon the first launch of EDMUS 5.7.1, this EDMUS 5 or 4 database will be updated to the new EDMUS 5.7 format.

Why a local copy?

Because the database update process (step 7 below) will be quicker and safer,
with no risk of network interruption.

(You will place the database back onto the server at a later step: see step 13).

Proceed as follows:

- Make a **new copy** of the backup copy of your database. **Rename** this second copy as "Edmus.df1".
- Then place this second, renamed copy **on the computer where you have just installed EDMUS 5.7.1**, at the following location (replacing the Edmus.df1 datafile that is already there if any):

(for Windows XP)

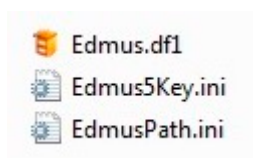
C:\Program Files\EDMUS Software v5\EDMUSdata\Edmus.df1

(for Windows Vista, 7, 8, 10)

C:\Users\Public\EDMUS Software v5\EDMUSdata\Edmus.df1

(for Mac OS X)

/Applications/EDMUS Software v5/EDMUSdata/Edmus.df1



6. Launch EDMUS 5.7.1 for the first time



o On Windows

Launch EDMUS 5.7.1 by double-clicking the "EDMUS 5" shortcut that was placed on the Desktop.

o On Mac

Launch EDMUS 5.7.1 by clicking the "EDMUS 5" shortcut that was placed in the Dock.

7. Update your older EDMUS database if any

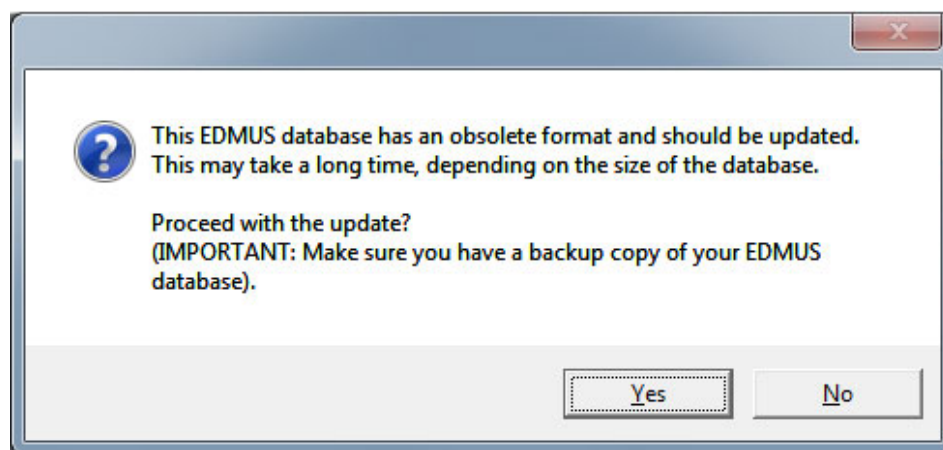
If you already had a previous EDMUS database, you should now update the datafile itself (the file containing your patients' data) to the new EDMUS 5.7 format:

- o If it was a network database, you have placed a copy of this file into the new EDMUS 5.7.1 installation at step 5.
- o Otherwise, if it was a stand-alone database, it has been kept inside the EDMUS 5.7.1 installation.

Two cases may occur depending on the version of EDMUS you had, corresponding to CASES 2 and 3 above:

CASE 2: There was an older version of EDMUS 5 (5.0 to 5.7)

At first launch of EDMUS 5.7.1, you will be asked if you wish to **update the database to the new EDMUS 5.7 format**, click Yes:



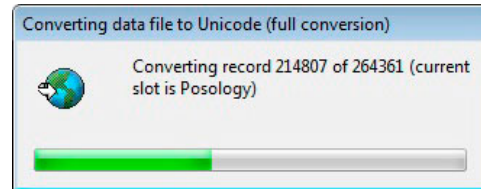
What's going to happen

EDMUS 5.7.1 will automatically update the database structure.

Attention, this operation can take a long time, up to one hour or more for a very large database (several thousand patients). This is very dependent on how powerful your computer is.

CASE 3: There was an EDMUS 4 database (4.0 or 4.1)

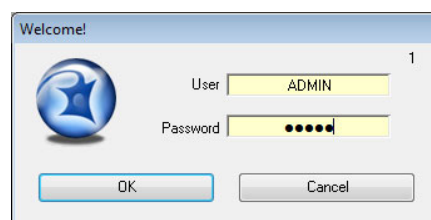
- At first launch of EDMUS 5.7.1, the EDMUS 4 database will automatically be **converted to Unicode** (if this step does not proceed automatically, choose the "Full conversion" option when asked):



- Then (exactly as in CASE 1 above), you will be asked if you wish to **update the database to the new EDMUS 5.7 format**, click Yes.

8. User name and Password

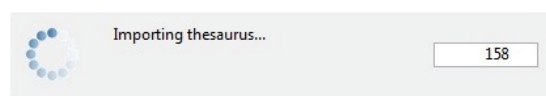
Au lancement (après la mise à jour de la base le cas échéant), EDMUS demandera *votre nom d'utilisateur et votre mot de passe*. Par défaut, il s'agit de ADMIN et ADMIN (ne pas tenir compte des majuscules ou minuscules), sauf si vous les aviez modifiés dans la base EDMUS antérieure que vous venez de mettre à jour.



9. At first launch: importing new Thesaurus and Help files

ONLY WHEN UPGRADING AN OLDER EDMUS 4 OR 5 VERSION (CASE 2 or 3 above)

At first launch, EDMUS will **automatically import new Thesaurus and Help files**: this will only occur only this once, and will last a few minutes at most. The personal items you may have added to the Thesauruses will be kept.



Note: if, when launching EDMUS later, this importation step occurs again, you should **DELETE** the following files manually which may have remained in the folder where EDMUS was installed (EDMUS Software v5/EDMUSdata/):

Countries.txt, Departements.txt
EDMUSV5_EX.ETH, EDMUSV5_ST.STH, EDMUSV5_TH.THE, EDMUSV5_TT.TTH
EDMUSV5.HLP, EDMUSV5.SCL

10. Activate your EDMUS 5 license

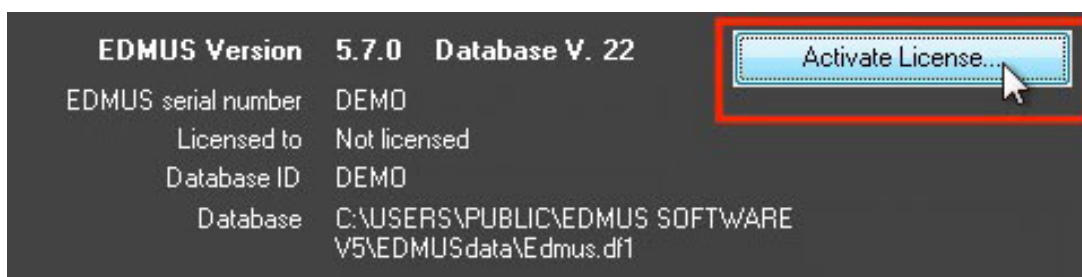
Once EDMUS is installed and the database (if any) is updated,
you should activate your EDMUS 5 license.

Without a license, you will not be able to create more than 3 patients in the database,
 and EDMUS will stop functioning after a given date.

If you don't have an EDMUS 5 license, or you have lost it, please contact the technical support (support@edmus.org). The license is provided as a .zip file.

To activate your EDMUS 5 license:

- o Unzip the file, you will get one or more file(s) with an ".ini" extension (for instance "B1286.ini"), each corresponding to an EDMUS license.
- o Launch EDMUS 5, and select "About EDMUS" from the "File" menu.
- o In the window that opens, click the "Activate license" button.
- o Go select the license file.
- o You will then see that the "EDMUS serial number", "Licensed to" and "Database ID" items have been updated with your data.



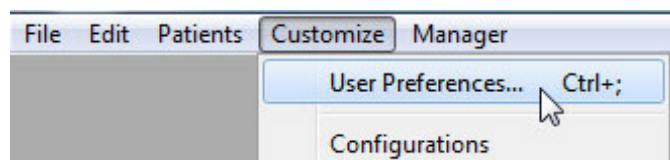
11. EDMUS Language & Configuration

o **Language**

At first launch, for a new EDMUS installation, the program will by default be in English.

If you wish EDMUS to use another language:

- Choose "User Preferences" from the "Customize" menu.



- ▶ Then, in the "User Preferences" window that appeared, click "Modify", select the language to use, and click OK.



○ Configuration

A configuration is a **presentation format**, a way of presenting data in a more or less detailed form or for a specific use.

At first launch, for a new EDMUS installation, the program will be by default in the "Light" configuration, which only displays the main fields of the database.

You can change the configuration:

- ▶ Choose "User Preferences" from the "Customize" menu.
- ▶ Then, in the "User Preferences" window that appeared, click "Modify", select the configuration to use, and click "OK".



The following configurations are available:

- ▶ **Premium**: the most complete (displays all fields of the database),
- ▶ **Light**: simplified (only displays the main fields of the database),
- ▶ **EDEN**: specifically tailored for NMOSD patients.

In every case, the same database is used, the difference is only one of presentation.

12. Quit EDMUS

Before proceeding to the next step, quit EDMUS ("File" menu -> "Quit").

NETWORK INSTALLATION

After having installed EDMUS 5.7.1 on a first computer, and updated the database if any to the EDMUS 5.7 format, you should:

- place the EDMUS database onto the server, and point the EDMUS 5.7.1 software to this shared database,
- install EDMUS 5.7.1 on the other computers which must access the shared database.

13. Place your database on the server

You will now place your EDMUS database on a networked computer (server), to which all computers running the EDMUS software can have access.

- *If this is the first installation of EDMUS*
Place an empty EDMUS database file (with no patient) on the server.
- *If you already had a stand-alone installation of a previous EDMUS version (4.0 to 5.7)*
In the installed EDMUS 5.7.1 folder, your previous database has been updated (see steps 6 to 7 above): place this updated database on the server.
- *If you already had a network installation of a previous EDMUS version (4.0 à 5.7)*
You now have, in the installed EDMUS 5.7.1 folder, an Edmus.df1 file which is an updated local copy of your old network database (see steps 5 to 7 above): place this updated database on the server.
- *If you already had a stand-alone EDMUS installation of version 5.7.1*
Place this database on the server.

In all cases, the database file to place onto the server is located in the installed EDMUS 5.7.1 folder, at the following location:

(for Windows XP)
C:\Program Files\EDMUS Software v5\EDMUSdata\Edmus.df1

(for Windows Vista, 7, 8, 10)
C:\Users\Public\EDMUS Software v5\EDMUSdata\Edmus.df1

(for Mac OS X)
/Applications/EDMUS Software v5/EDMUSdata/Edmus.df1

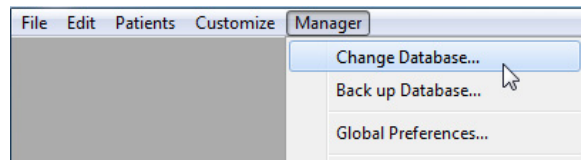
Then:

- Once the database has been placed on the server, it is recommended to **delete the database from the EDMUS 5.7.1 installation** (this will prevent an inexperienced user from connecting to this database again if the network is temporarily unavailable, leading to a mix-up between the 2 databases).
- It is recommended **not to keep the previous database at the same location as the new database** (to avoid any confusion or accidental update of the previous database), place it elsewhere.
- You may rename the database on the server if you wish, e.g. "Edmus57.df1".

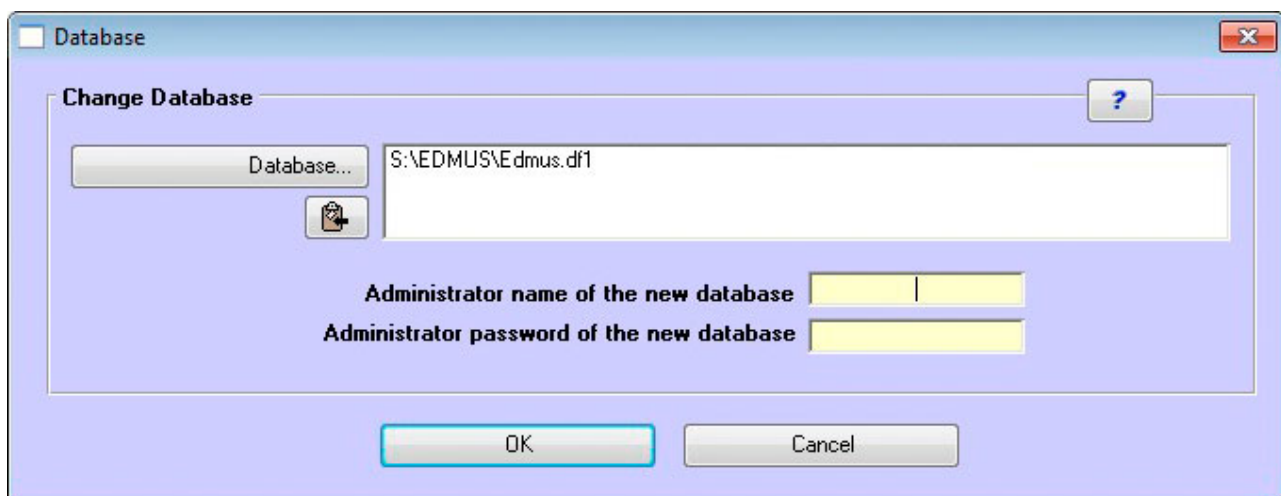
14. Point EDMUS to the shared database on the server

You will now instruct the EDMUS software to access the shared database on the server.

- On the computer where you have installed EDMUS 5.7.1, launch EDMUS. In the "Manager" menu, select "Change Database":



- In the window that opens, click "Database..." and go find the shared database file on the server:



Then enter the Administrator user name and password ("ADMIN" and "ADMIN" for a new database, or the same ones you used for the old database), and click "OK".

- If the database is an updated one, you should check whether EDMUS is truly connected to this database. To do so, choose "Patient List" from the "Patients" menu, and click "Show patients": the list should display all the patients of your old database.

15. Install EDMUS on the other computers

You now have to **install or upgrade EDMUS on every other computer** that must access the shared database.

On every one of them, observe the following steps as described above:

- **"3. Launch the installation program"**
- **"4. Proceed with the installation"**

If asked, and if you already had an EDMUS installation (with a valid license) on the computer, you should select "UPGRADE" among the proposed options.

- BEFORE launching EDMUS 5.7.1 for the first time on this computer, it is recommended to DELETE the following files that the installer program will have placed in the EDMUS Software v5/EDMUSdata folder:

adresse_adresse.fix	EDMUSV5_EX.ETH
adresse_patient.fix	EDMUSV5_ST.STH
Countries.txt	EDMUSV5_TH.THE
Departements.txt	EDMUSV5_TT.TTH
	EDMUSV5.HLP
	EDMUSV5.SCL

Otherwise, the importation of thesaurus files into the shared database (step 9 described above) will be needlessly performed again, while you have already done it when installing EDMUS on the first computer.

- **"6. Launch EDMUS 5.7.1 for the first time"**
- **"8. User name and Password"**
- **"10. Activate your EDMUS 5 license"**
 - Every computer should have a valid EDMUS license.
 - If you wish several computers to be able to access the database at the same time, each computer must have a different license.
- **"11. EDMUS Language & Configuration"**
Change language and configuration if desired.
- **"14. Point EDMUS to the shared database on the server"**

VERY IMPORTANT:
Install EDMUS 5.7.1 on ALL computers connected to the shared database.

To be able to access the shared database,
all connected computers MUST use the SAME version of EDMUS.

EDMUS 5.7.1 - LAST VERSION OF EDMUS

Version 5.7.1, released on 2019-05-06, will be the last version of EDMUS.
Development of the software has stopped and no further version will be provided.
Technical support remains available.

Important: Please note that, although EDMUS 5.7.1 is compatible with Windows 10,
it is not certified on this platform and may not function optimally.